

ELEGANT VILLA WITH POOL WITH SEA VIEW AT THE HARBOR



SY-0833

 **500m²**

 **5**

 **6**

Вилла

€3 300 000

Город Cala Dór

Регион 18872

Площадь участка 1200 m²

Жилая площадь 500 m²

Площадь балкона/terraces 150 m²

Дополнительно
Бассейн.



This unique villa stands directly above the exclusive marina at Cala d'Or and enjoys breathtaking views. A pathway alongside the house leads straight down to the harbour promenade. The property itself is split into three levels. Flooded with natural light, the main entrance is located on the second floor, promising sensational views across the harbour. In addition to a spacious living/dining area with fireplace, there is a modern, open-plan fitted kitchen and guest WC. An array of terraces will allow you to savour the bustling activity in the harbour below. On the first floor there are three beautiful bedrooms with en-suite bathrooms, walk-in closets and terraces, plus a large garage and utility room. A master suite with dressing room is located on the ground floor, complete with en-suite bathroom and terrace. There is also one more bedroom with en-suite bathroom and another room. A generously sized living room with its own bar and billiard table is the perfect place to spend a relaxing evening with family and friends. Rounding off the picture on this floor is a fitness room with a shower. Step outside onto the terrace and into the garden which boasts a gorgeous infinity pool and whirlpool. The villa is situated in a peaceful cul-de-sac and has three parking spaces on site. An outdoor staircase also provides access to the various levels. All of the terraces which grace this elegant property offer spectacular views across the harbour. The excellent Vall d'Or golf course near Porto Colom and the charming village of Santanyi with its weekly markets and shops can be reached by car in just a few minutes.

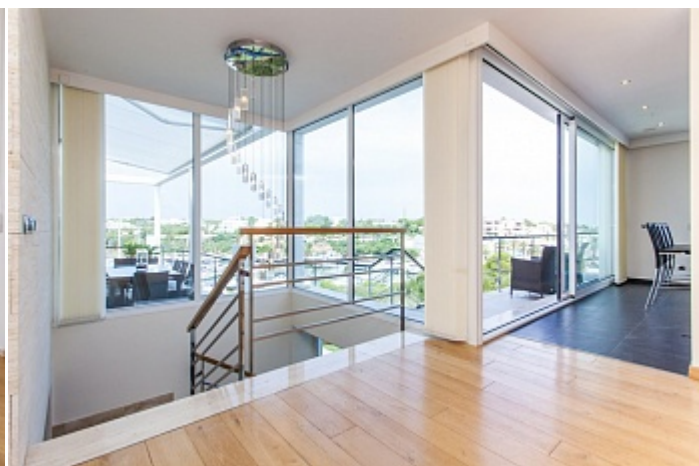
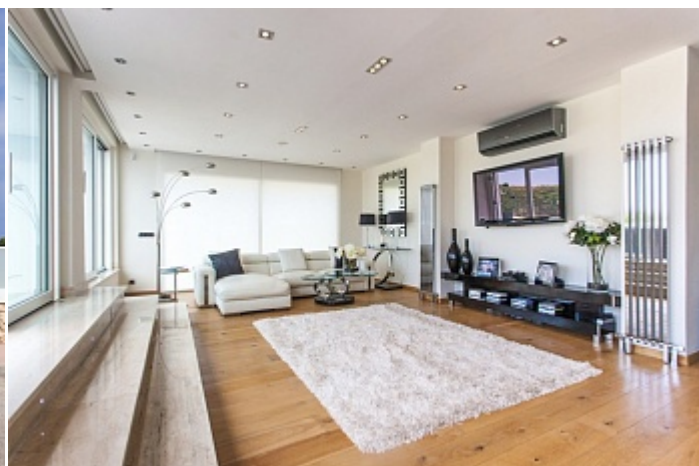


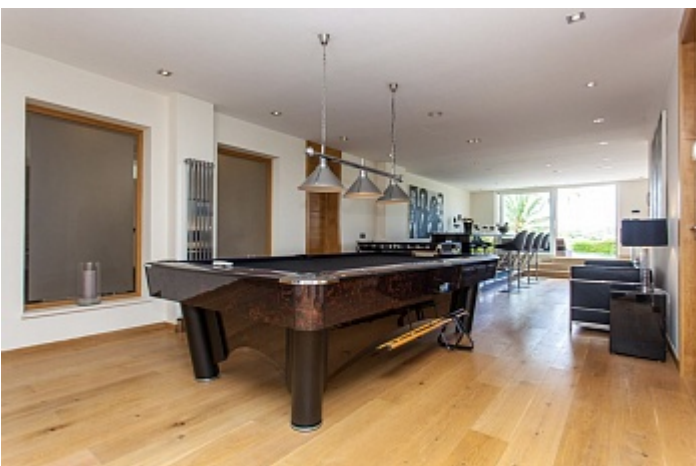
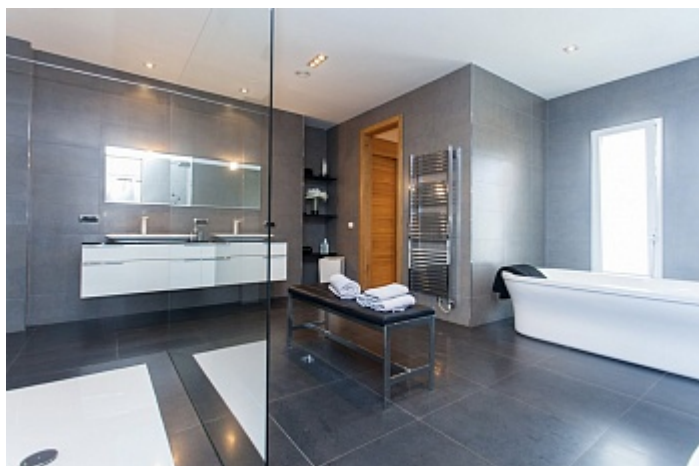
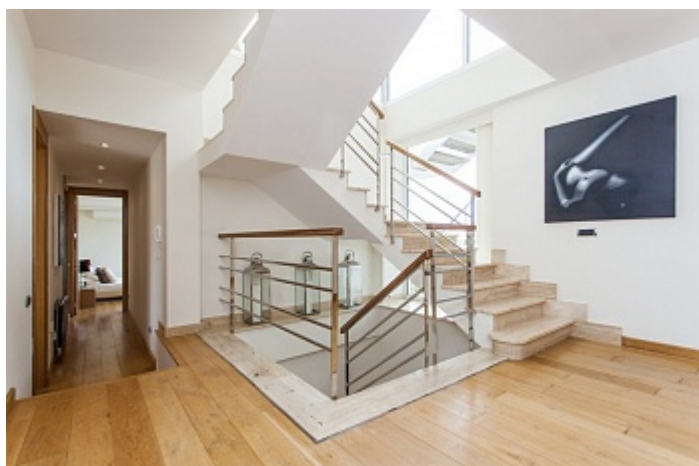


2024, Yes! Mallorca Property

Tel: +34 971 695 828

nedvizhimost-majorki.ru







	Consumo de energía KWh/m ² año	Emisiones Kg CO ₂ /m ² año
A		
B		
C		
D		
E	44,8	163,20
F		
G		